



PROPHETIC

Project Management Consultancy

PMC

“Building the Future of Architecture
Spaces”

PROPHETIC





Build environments

When it comes to building environments for learning spaces, Prophetic Project Solution can create various types of spaces tailored to different educational needs. Here's an expanded list of types of built environments that can be included

types of built environments for learning spaces:

- Traditional Classrooms
- Collaborative Learning Spaces
- Libraries & Media Centers
- Outdoor Learning Environments
- Creative Studios
- Technology-Integrated Spaces
- Inclusive Learning Spaces
- Dormitories & Student Housing

What do lack in project management today

Technology and Tools

BIM adoption gap

automation underuse

Fragmented digital tools

Lack of data-driven insights

Remote collaboration gaps

Construction site tech gaps

BIM adoption gap

Collaboration

miscommunication

Insufficient user involvement

Reactive risk management

Budget overrun issues

regulatory compliance

environmental integration

Sustainability/resilience

Time-Cost

management skill gap

Leadership misalignment

Cost estimation errors

Construction delays

Staff training deficiency

Lack of real-time tracking

labor cost volatility

Our Idea on quality PMC

The quality of project management, especially in architecture, hinges on a few fundamental principles that drive success across various phases of a project. Here's an outline of our approach to defining and improving project management quality:

- Effective Communication
- Proactive Risk Management
- Resource Optimization

Introduction

Prophetic Project Solution Pvt. Ltd. is dedicated to revolutionizing the education landscape in India by designing and building innovative learning spaces that foster creativity, collaboration, and engagement.

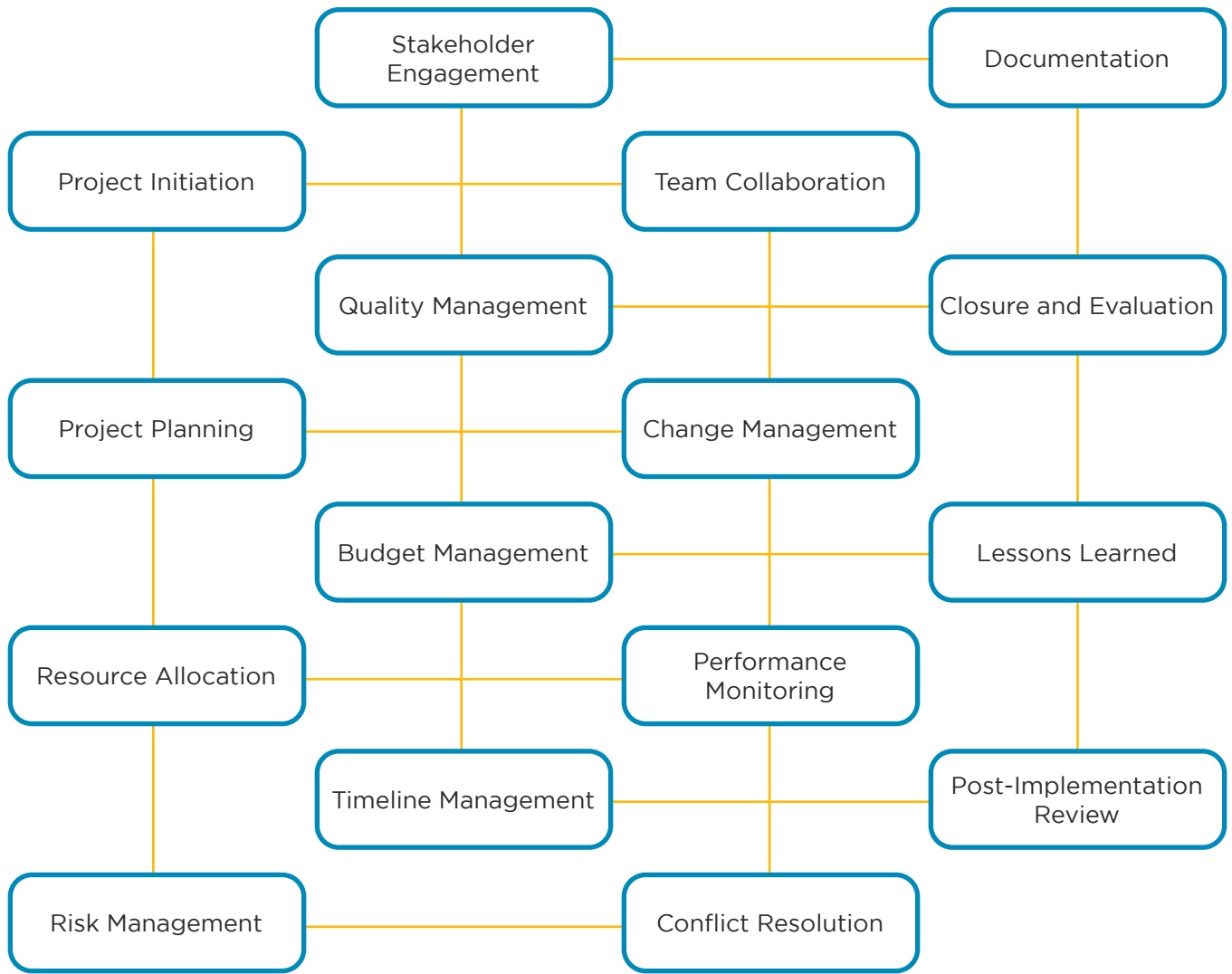
Prophetic PMC

3 Major points that identified through these points.

- Project management
- HVAC/MEP Consultancy
- Civil consultancy

Overall combined impact of these 3 points:

Prophetic PMC integrates sustainable practices and functional project management goals in architecture to enhance the overall quality of project execution.



The way we work to execute a quality PMC

To optimise project management system, the idea works by involving three key factors of management:

1. People:

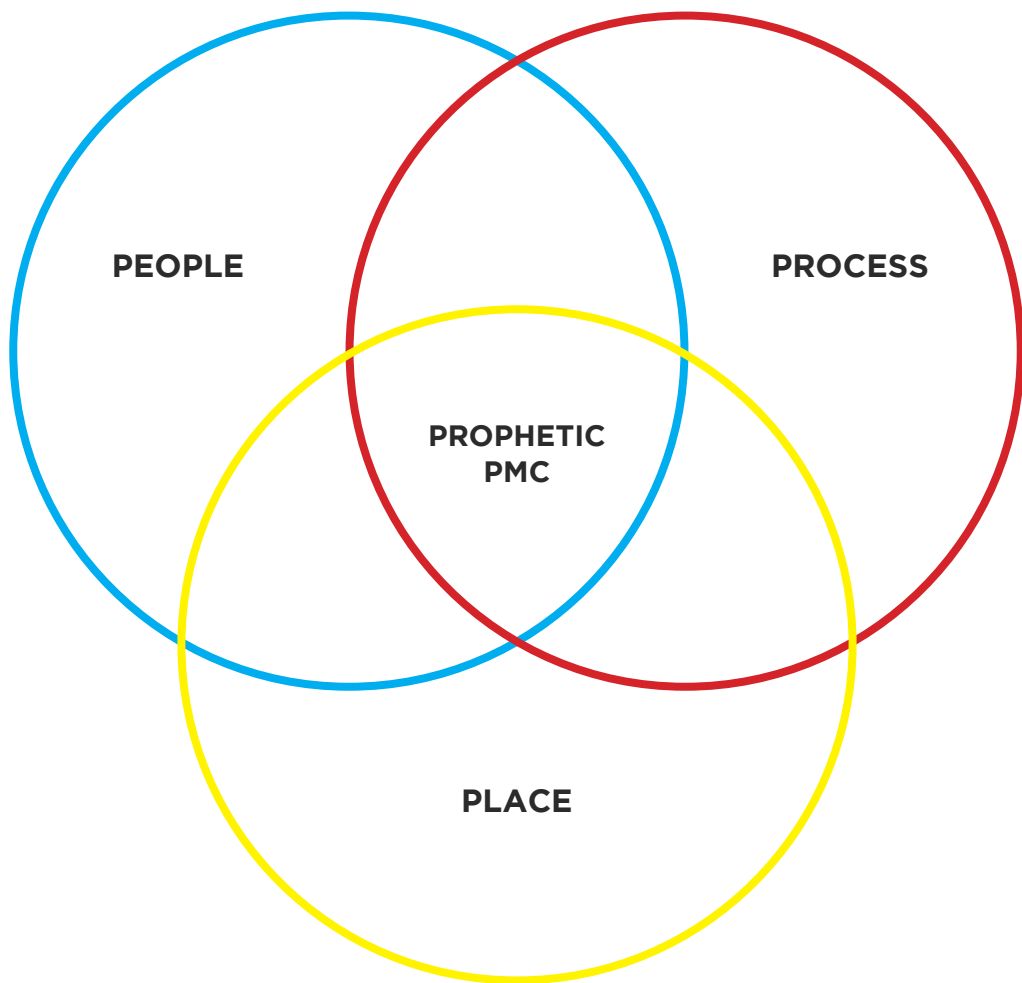
- 7 orbital user map

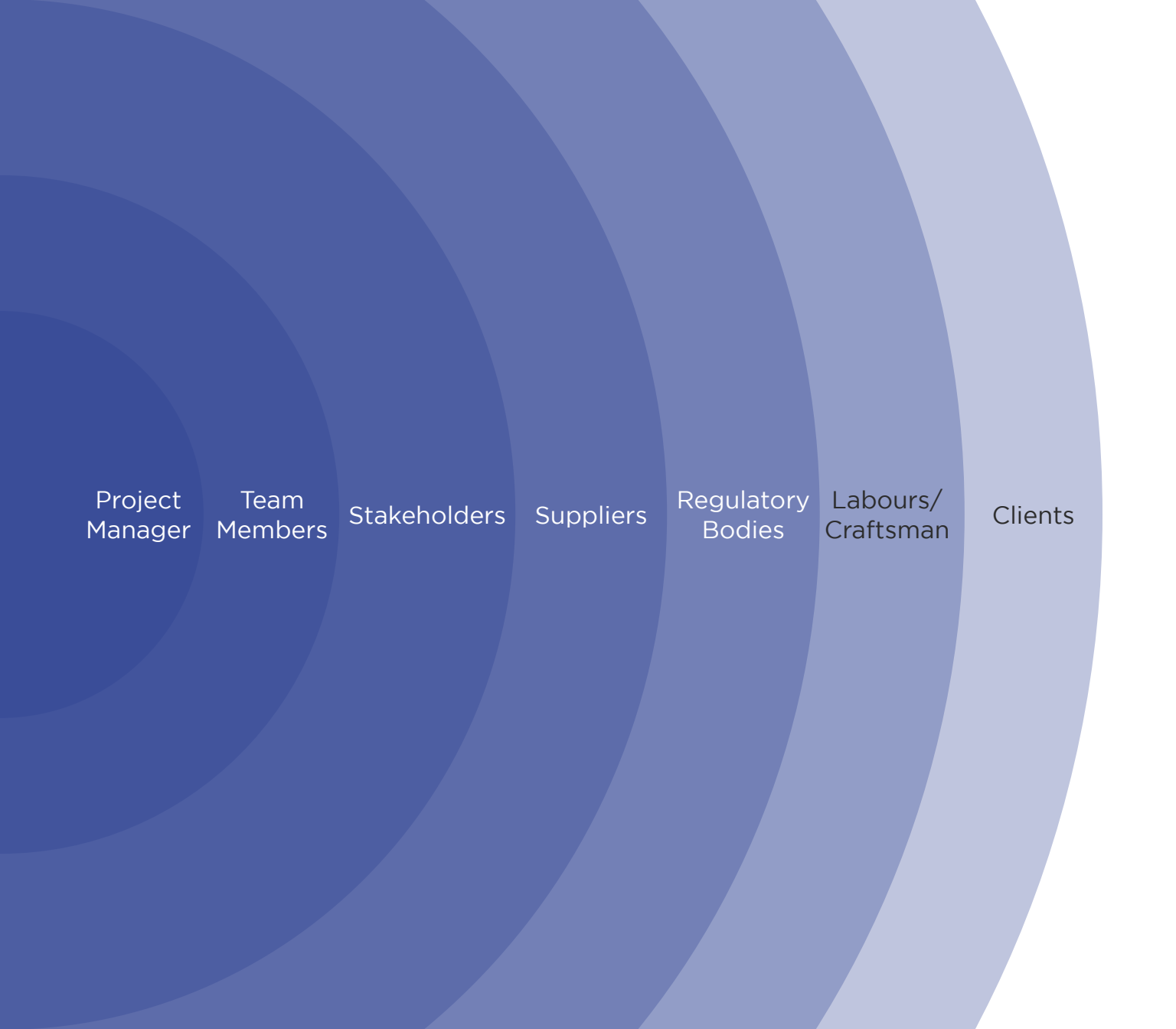
2. Process:

- Primary activity
- Secondary activity
- Tertiary activity

3. Place:

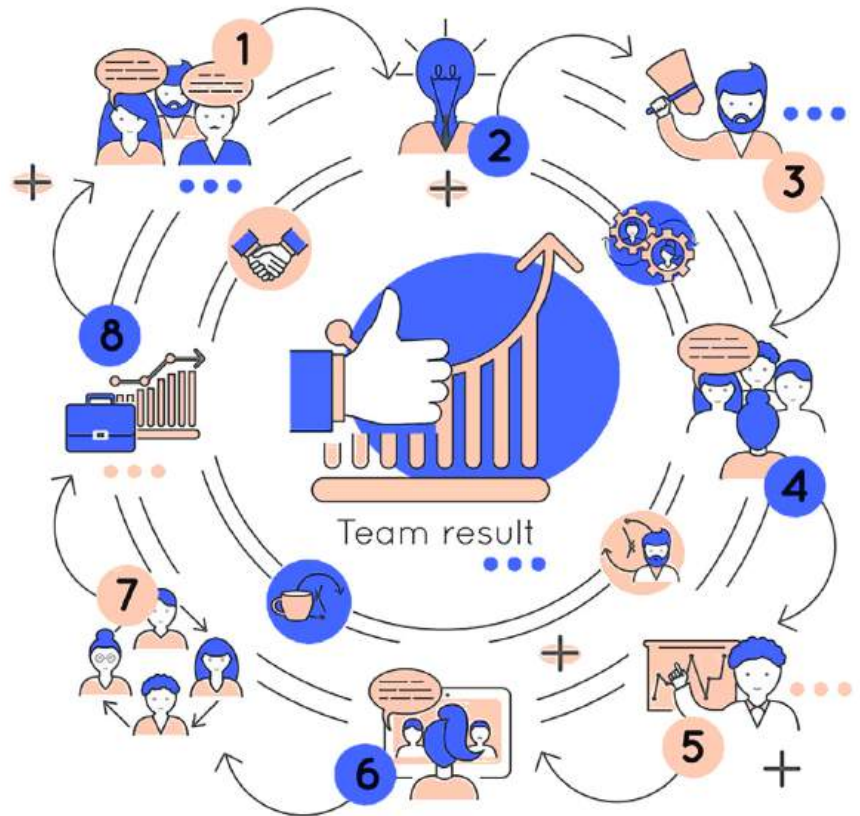
- Spatial Planning
- Resource Management





Managing people

Prophetic PMC involves map of seven distinct user orbits to understand behaviours within the system. Each user's behaviours are important for critical observation and planning and mapped in daily, weekly, monthly and yearly plan.



Process

- Prophetic PMC's approach involves mapping seven distinct user orbits to better understand the users of the project management system.
- Understanding each user's behavior is crucial for executing the project systematically.
- By monitoring users' activities, the system can effectively address the diverse management needs of a specific architectural project.

These 3 categories of activities are classified as:

1. Primary
2. Secondary
3. Tertiary

Through these points we can identify:

- Time estimation
- Budget
- Resources
- Stakeholders engagement
- Team management



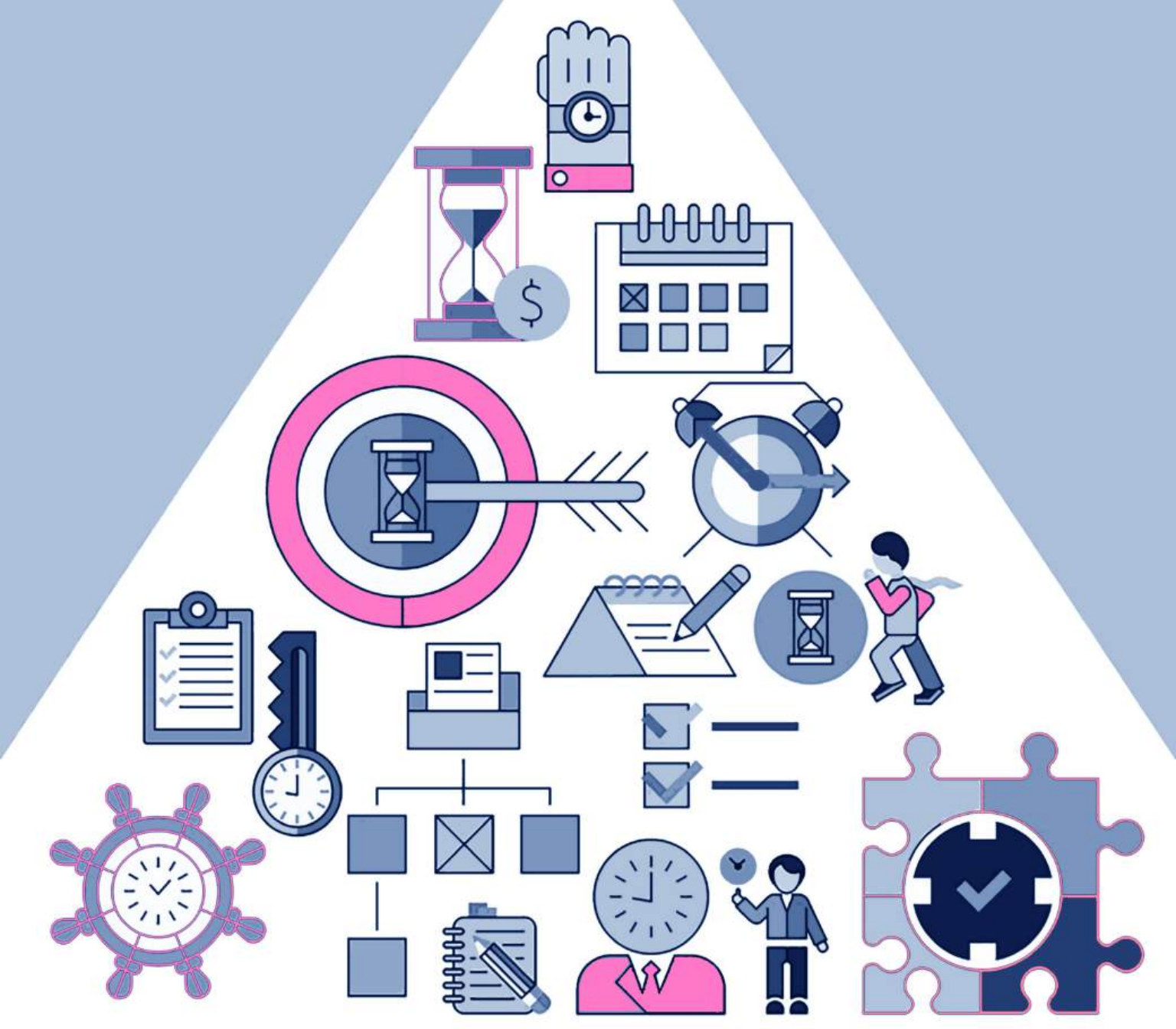
Place

Types of spatial management in PMC

The space and environment affects the management system to execute the architectural projects.

To make it more efficient it need to focus on these 2 points.

- Spatial Planning
- Resource Management





What we have done

Residential





Residential





Residential





Residential



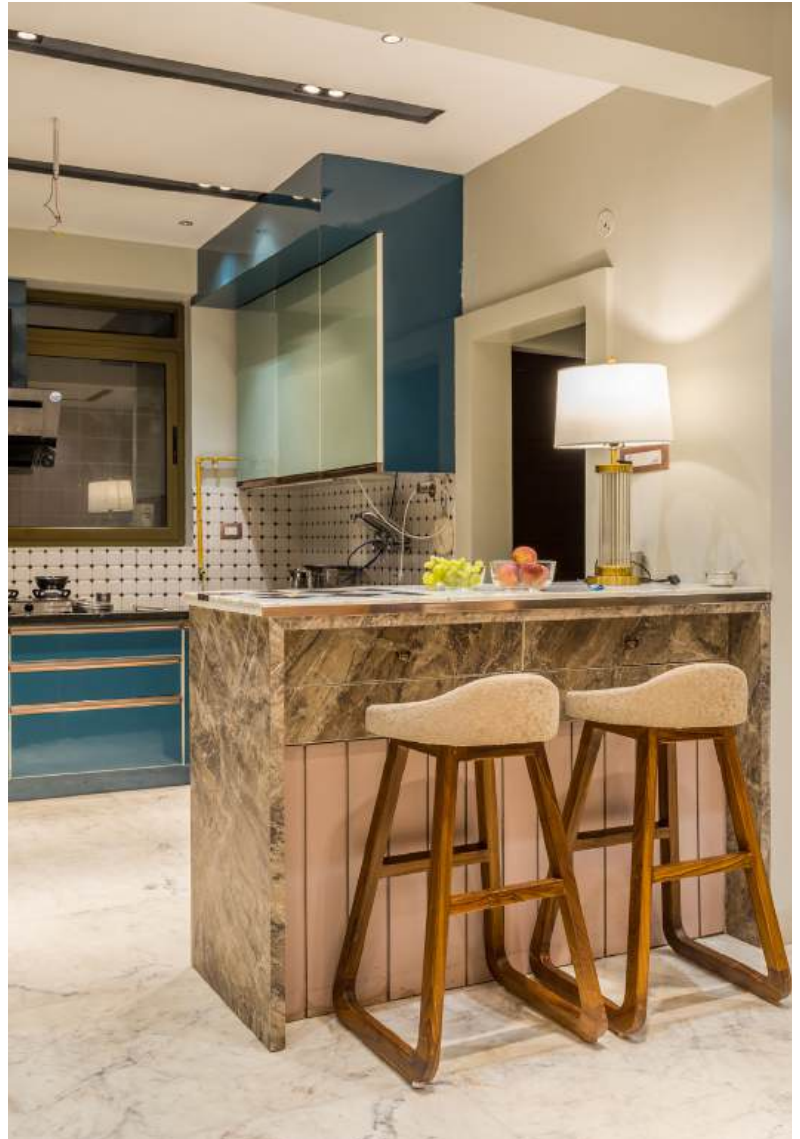


Residential





Residential





Residential





Learning spaces





Learning spaces





Commercial





Commercial





Commercial





Sport





OUR CLIENTS



Other projects

- GreenValley Kriyalaya - Chennai
- IIM - Bodhgaya
- IIM - Jammu
- Mowgli Pre School - Bhopal
- Hybrid Nest Guest House - Indore
- Vistara - Indore
- The Academic City - Mohandkheda
- Dhirubhai Kokilaben Hospital - Indore
- ACTS Sport Flooring - Bangalore
- Kalinga Institute of Medical Science Library - Bhubaneshwar
- Timpany School - Vizag
- Laurell's School Project - Indore
- Jet Kids School - Yavatmal
- Springfeild Banglow (Dr. Prachi) - Indore
- YP Home - Indore
- D Ornet - Indore

What we offer

1. Project Integration management
2. Project Scope management
3. Project Time management
4. Project Cost management
5. Project Quality management
6. Project Resource management
7. Project Communications management
8. Project Risk management





Our Team



Yogendra Patidar
Director



Navratan Sharma
Director



Ajayraj Nayak
Project manager



Shweta Bhardwaj
Senior Interior designer



Gourav Pandya
Project coordinator



Prakash Patidar
Finance and accounts



Hiral Jain
Architect



Arpita Meda
Junior Interior designer



Amisha Ganeshe
Junior Interior designer



Namita Soni
3D visualizer



Vikas Goswami
Civil engineer



Malhar S. Chaudhari
Design strategist



Abhijeet
Ass. Project manager



Vishv Naik
Civil engineer



Deepesh Shere
Purchase manager



Himanshu Sarkar
Site supervisor



Devendra Bhaisare
Inhouse craftsman



Gaurav Bagdi
Office service

For inquiry

scan this



Get in touch

info@propheticindia.com

+91-9039056176

